

Large Chemical Company

Background and Situation

- White Pigment & Mineral Products Strategic Business Unit consisting of nine plants
- Site employs approximately 850 people.
- Partnered with internal consulting group specializing mainly in technology improvement
- Focus was to reduce fixed costs, increase uptime and implement sustainable processes to systemically identify and eliminate reliability problems

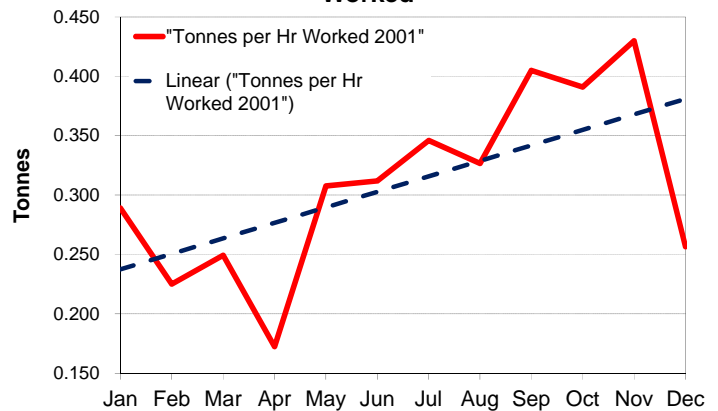
Process Results:

- Implemented Work Processes
 - Maintenance
 - Operations
 - Reliability problem tracking
 - Accountability
 - Process measurement and failure reporting
 - Analysis and structured problem solving
- Increased tonnes produced per maintenance hour worked by 45% over previous year average.

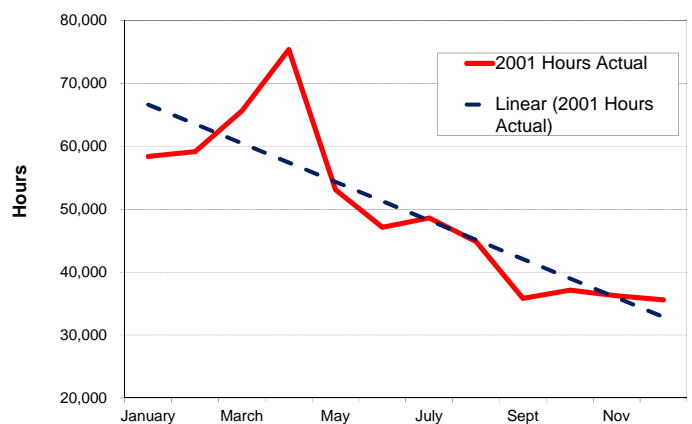
Bottom-Line Impacts:

- Reduced fixed costs by \$6.2 million
 - \$3.9 million in Contractor cost reductions
 - \$2.3 million in Warehouse inventory reductions
- Increased Annual Revenue by \$13 million
 - Improved uptime to 85.9% from a five-year average of 76.7%

Productivity: Tonnes per Maintenance Hour Worked



Contractor Hours Fixed Cost



RELIABILITY MANAGEMENT GROUP

Masters of Implementation