

Gulf Coast Petrochemicals Company

Background and Situation

- Single train refinery with 200k bbd output
- 450 person refinery, 275 union membership
- Started TPR Implementation 30 months ago, a joint effort by Operations, Maintenance and Technical

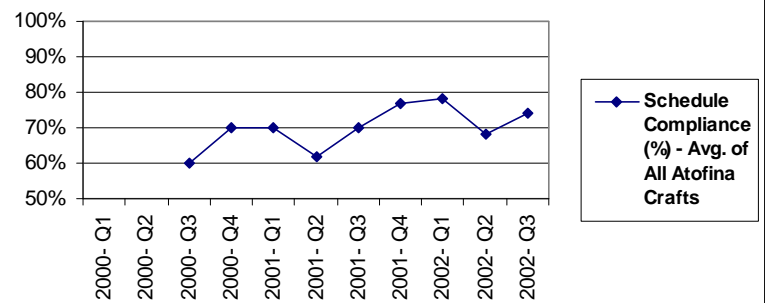
Process Results:

- Successfully implemented SAP PM Modules
- Created Planning Department that fully plans 60% of all jobs
- Increased Schedule Compliance (Adherence) from 65% to 73%
- Reduced routine maintenance contract Full Time Equivalents (FTEs) 34%
- Absorbed additional maintenance demand for new refinery systems using fewer maintenance personnel

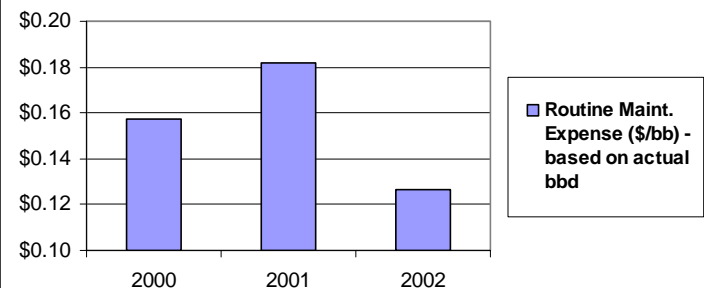
Bottom-Line Impacts:

- Decreased per barrel maintenance expenses and maintained a flat maintenance budget

Schedule Compliance (%)



Routine Maintenance Expense \$/bb



RELIABILITY MANAGEMENT GROUP

Masters of Implementation